



1025 Morningside Drive, Nanaimo, BC, V9T 6C3
Telephone: 250-758-5711
Website: <http://hb.schools.sd68.bc.ca>
School Year: 2019-2020
Issue #1 – September 2019

Principal: Christine Bohm
Vice-Principal: Kelly Payne
Secretaries: Susan Clark
Marina Lockhart

Principal's Message



To both our returning and our new families, Welcome to Hammond Bay! We hope you and your family have had a wonderful and restful summer break. The staff is looking forward to another exciting year of learning with your child(ren).

Every month, Hammond Bay distributes a newsletter, containing important and pertinent information for the upcoming month. It is also an avenue to celebrate students' achievements. All of our newsletters are distributed via email. Please ensure that your email address is correct on the Student Verification forms coming home. Please let us know if your address changes throughout the year too, so you can continue to receive the newsletters and Friday Reminders. Newsletters are also uploaded to our school website every month.

We have had some staffing changes over the summer. We are currently staffed for 15 divisions and 356 students. Below is the staff list for this year:

Librarian – Mme. Jacqueline
SST – Mme. Mitchell & Mme. St-Pierre
Music/Band – Mme. De Verteuil
Kindergarten – Mme. Isabelle
Kindergarten – Mme. Linda
Grade 1 – Mme. Natascha
Grade 1 - Mme. Raduta
Grade 2 – Mme. Kim
Grade 2 – Mme. Monica
Grade 3 – Mme. Anneli/Mme. Danica
Grade 3 – Mme. Camposano
Grade 4 – Mme. Payne/Mme. Janelle
Grade 4/5 – Mme. Mitchell/Mme. Janelle
Grade 5 – M. Palmer
Grade 5/6 – Mme. Nicole/Mme. Dominique
Grade 6 – M. LaBounty
Grade 6/7 – Mme. Ashworth-Clarke
Grade 7 – M. Kevin
Aboriginal EA – Mme. Pauline
EA – Mme. Sue-Ellen
EA – Mme. Amy
EA – Mme. Kim
Library Clerk – Mrs. Kim
Custodians – Vivian Aarset / TBD
Counselor – Ms. Silickas

Psychologist – Ms. Cote
Speech & Language – Mme. Becky Ziemanski
Child & Youth Care – Ms. Posnikoff
Secretary (Main) – Mrs. Clark
Secretary (Thur & Fri) – Mrs. Lockhart
Vice-Principal – Mme. Payne
Principal – Mme. Bohm

We would like to say thank you to Ms. Zagol for stepping in and beginning the school year with us. Ms. Zagol is replacing Mrs. Clark, our main secretary, through the month of September.

As you have noticed, our upper ball area is currently a construction zone. Students are still able to play in the ball area, but the entrance/exit from the school property via Shores Drive is closed. The construction is scheduled to be completed shortly, and I will let you know when that access point is reopened. Our apologies for the inconvenience.

At the start of any school year, teachers regularly employ diagnostic assessments in reading, writing and mathematics. These assessments are meant to determine the relative strengths and challenges for our students, so that we may begin to build and implement support plans and extension projects. This year, Ecole Hammond Bay will be working with the ALPIN and NLPS Reading Assessments. These assessments have been designed by teachers of our district and are available in both English and French. Our Grades 1-7 students will be assessed throughout October, and Kindergarten will be completed in January once they have a working knowledge of the French language. The results of these assessments are to inform our instruction and help us plan the next steps in our school goals.

Foundation Skill Assessments will begin for Grade 4 and 7 students in October. This assessment is mandated by the Ministry of Education and provides a snapshot of how your child is progressing in their learning. If you have questions about the FSA, please don't hesitate to contact me.

As the weather begins to turn to rain, please make sure your child has a pair of indoor shoes here at school. We would very much appreciate everyone's cooperation in trying to keep the school clean. Thank you.

If you have questions or concerns regarding your child’s educational plan, please do not hesitate to contact the classroom teacher or myself. I look forward to meeting with you.

Christine Bohm

Vice Principal Message

I would like to thank the students and staff for a fantastic September start up. It is so nice to see all the familiar faces! It has also been a pleasure to welcome and visit with our new kindergarten students. Bienvenue a École Hammond Bay! September is a busy month and many permission forms and information sheets are being sent home. Just a reminder to families to make sure that your signed permission forms are submitted so all students have the opportunity to participate in our outings. We will be having our Terry Fox run, our regular Neck Point runs and excursions as well as a Dot project and Orange shirt day celebrations.

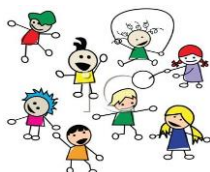
I would like to wish good luck to our cross-country and football teams this season. I am excited about continuing to teach in the Grade 4 classroom as well as work with many other grades in different capacities this year. My office hours will be Tuesday afternoons and Thursday mornings. I can be reached via email at Kelly.payne@sd68.bc.ca and by phone at the school 250-758-5711.

Warm Regards,

Kelly Payne
Vice-Principal

Erase Bullying Resource

The Ministry of Education in conjunction with School Districts across the province have developed and implemented an online student and parent resource about and to report bullying incidents. Please visit www.erasebullying.ca for more information.



BELL SCHEDULE – 2019-2020

Our bell schedule for this year is as follows:

MONDAY

8:35 a.m.	Start
10:15 – 10:30 a.m.	Short Recess
11:45 a.m. – 12:21 p.m.	Lunch Recess
1:27 p.m.	Dismissal

TUESDAY – FRIDAY

8:35 a.m.	Start
10:15 – 10:30 a.m.	Short Recess

11:45 a.m. - 12:21 p.m.
2:27 p.m.

Lunch Recess
Dismissal



Nut Aware

We greatly appreciate the effort Hammond Bay families make to ensure that our school is safe food zone for all students. While we cannot guarantee a nut free environment, we are reminding parents/guardians that snacks and foods containing nuts are not encouraged to be brought to school. We have a number of students and staff with severe life threatening allergies to nuts. We thank you for your attention and cooperation.

Rainbow Groups

Rainbows is a peer support group program for children who have had significant changes happen in their family. Those changes could include divorce, death, foster care or any other loss. The purpose of the Rainbows group is to alleviate the pain that accompanies grief, loss and change. The group focuses on 12 different topic areas helping children to share feelings and learn coping strategies. The groups are small and delivered for different age groups, the groups are led by me and I am a trained Rainbows facilitator. The group will meet during school hours (for about 30-60 minutes) and will last for 12 weeks. If you have questions about the group or would like your child to participate, please contact me at 250-668 8493.

Sandy Posnikoff
Child and Youth Family Support Worker

Parking Lot Safety Concerns

We recognize that our parking lot is crowded and difficult to navigate during our peak hours (morning and afternoon), however to keep everyone, especially our students safe, please be reminded that:



- the speed limit should be very slow. Children do not always look before they step out into the traffic.
- that there is no stopping in the paved round-about area at the top of the parking lot. Only vehicles with a designated handicap sign in their window and daycare buses are allowed short term parking in this area.
- The lower round-about is for drive through only. **Please do not park in this area.**
- If you are choosing to park in the school parking lot, **please do not block our entrance and exit or double park.**

- The traffic flows only one way – entry to the right.

We encourage parents to use other parking areas which are available around the school site: along Morningside, Neck Point Park and Shores Drive to facilitate the large amount of traffic through our parking lot.

Thank you for helping to keep our students safe!

Absences

If your child is absent from school or know of dates your child will be away, we would ask you to please give the school a call by 8:35 am at 250-758-5711. If we are unavailable to take your call, please leave a detailed message on our answering service. Your child's safety is of the utmost importance to us.

Planners/Agendas

The teachers would like to use the Student Agenda again this year. However, pursuant to the Office of the Superintendent's letter dated October 2006, the purchase of School Student Agendas must be optional. The School Student Agendas have been customized and include useful information. Should you wish to purchase a School Student Agenda, they are available for purchase at the cost of \$6.00 from the classroom teacher.

Student Supplies

Each classroom has a Student Supplies List. These lists are available online at the new school website listed above. Paper copies of the Student Supplies List were sent home in June with the Summative Reports. Teachers may also be asking for supplemental supplies or funds for specific supplies used in the classroom. Please make cheques payable to School District 68.

Student Verification Forms

In September the school sends home Student Verification Forms for parents/guardians to look over and sign. This form contains important information about your child: current home address and phone numbers, medical information, allergies, etc. It is vital that this information is up to date for each school year. If you change your phone number throughout the year, please let the office know right away; so that in case of emergency or illness we are able to contact you. Please return all of the forms to the classroom teacher as soon as possible.

Earthquake Comfort Kit

Every year we ask parents/guardians to provide their child with an Earthquake Comfort Kit. The

kit is usually a ZipLock bag (medium sized) which contains some items designed to provide comfort to your child while they wait for their parent/guardian to pick them up from school after an emergency has occurred. Items such as a playing deck of cards, a small toy, and a note from the parent/guardian is usually included. The Emergency Comfort Kit form will be coming home shortly. Please ensure that your child has his/her own Comfort Kit at school by the end of September.

Drop Off and Pick Up

The school provides supervision 15 minutes before school and after school. Students should not arrive at school prior to 8:20 am, unless they are attending the Kidz Company daycare or are involved in a school run morning activity. Similarly, please ensure that your child(ren) are picked up at the end of the day by 1:45 pm (Mondays) and 2:45 pm (Tuesdays-Fridays). Students whose parents are late will be asked to remain at the office. If you know you will be late, please contact the office a *minimum of 15 minutes before the end of the day*, so that the office staff can locate your child and relay the message.

We would ask everyone to please respect the No Parking in the upper round about. This area is reserved for Day Care drop off and pick up and for those needing to parking in the Handicap Parking.

Volunteering

Parent volunteers are always welcome in our school. If you have time and/or a particular area of expertise, please do not hesitate to have a conversation with the classroom teacher(s). A Criminal Record Check must be completed and be on file at the school. Criminal Record Checks can be completed and submitted to the RCMP directly by visiting the school's new website and following the directions given under the Parent tab. Drivers for field trips and/or teams must also have, in addition to the Criminal Record Check, a Volunteer Driver Form completed. These forms are available in the office.

Meet the Teacher Night

Our "Meet the Teacher Night" will be held on Wednesday, September 25th from 6:30-7:30 pm. We are expecting to see many parents and children in attendance. If you have any questions or concerns regarding your child's progress, please contact the classroom teacher(s).

Band Rentals

Students who are taking Band this year (Div 12-15) are welcome to try and rent instruments at our annual Band Instrument rental event which takes place on Thursday, September 12th from 3-4 pm in the lower music portable. Thank you to Mme. De Verteuil who organized this exciting event.

Terry Fox Walk/Run

On September 20th we will be honoring the memory of our Canadian Hero: Terry Fox, by participating in the annual Terry Fox Walk/Run at Neck Point rain or shine. Parents are welcome to join us for the run/walk. All donations collected will be sent to the Canadian Cancer Society. Thank you for your support!

Whole School Run Program at Neck Point

We will start our fall running program at Neck Point again this fall. Classes will be invited to participate two/three times a week. This is great conditioning in preparation for the Cross Country North Zone and District Meets in October and November. Permission slips will be

sent home shortly and are needed to participate in this activity.

Sports

Football season is upon us! The league games begin on September 16th, with Bantam teams wishing to participate. We are in need of 2 coaches: Bantam Girls and Bantam Boys. If you would like to donate your time and expertise, please contact Mme. Bohm.

Cross Country is also getting started. Our Neck Point Runs are part of the training regime for the Cross Country Zone and District competitions. The Cross Country team will meet at lunch recess on the lower field. Students who are interested in Cross Country should be listening to the morning announcements for all the details.

PAC News

Hammond Bay's Parent Advisory Council had its first meeting on September 9th at 7pm at the school. PAC meetings are open to all parents/guardians. For a full list of meeting dates, please visit the school's website under PAC Corner. We hope you will join us.

If you have questions or comments for the PAC, please contact them directly via their email address: ecolehammondbaypac@gmail.com

School Calendar for 2019-2020

Schools Open for Students	Tuesday, September 3
Non-Instructional Day (School-based Pro D Day)	Friday, October 11
Thanksgiving Day	Monday, October 14
Non-Instructional Day / Pro D Day (Provincial PSA)	Friday, October 25
Remembrance Day (Observed)	Monday, November 11
Last day of classes before Winter Vacation	Friday, December 20
Schools Re-Open after Winter Vacation	Monday, January 6
BC Family Day	Monday, February 17
Non-Instructional Day (NDTA District Pro D Day)	Monday, February 24
Non-Instructional Day (School-based Pro D Day)	Tuesday, February 25
Last Day of Classes before Spring Vacation	Friday, March 13
Schools re-open after Spring Vacation	Monday, March 30
Good Friday	Friday, April 10
Easter Monday	Monday, April 13
Victoria Day	Monday, May 18
Non-Instructional Day (School-based Pro D Day)	Friday, May 29
Administrative Day - Schools are closed	Friday, June 26

Notes:

1. *There are 188 days in session.*
2. *Island Connect Ed has year round schooling with the School closed during district wide winter and spring vacations and August 6, 2019 – August 30, 2019 for summer vacation.*