



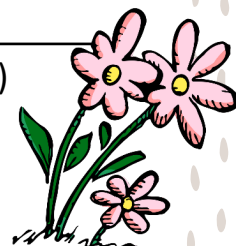
Weekly Memo

Monday April 22nd – Friday April 26th

Monday, April 22 <i>Earth Day</i>	Track & Field meet Gr 3-7 – Rotary Bowl. Be safe and have fun! *Spectators – Please park only at NIC
Tuesday, April 23	
Wednesday, April 24	
Thursday, April 25	Loose Parts play in the library – big recess Chess Club Gr 5-7 in room 1001 – big recess
Friday, April 26	Chess Club Gr 1-4 in room 1001 – big recess JEDI Club Gr 4-7 in the library – big recess

Upcoming Dates

May 5th	MMIWG RED DRESS DAY
May 6-10th	Book Fair
May 22nd	Class photos
May 29th	Zone 1 Track Meet (for athletes who qualify)



Track Meet:

Track & Field School Meet – Monday, April 22nd - Grades 3-7

Buses leave Hammond Bay at 8:45am (or as soon as they arrive after attendance is taken). Please ensure your child has packed something warm to put on between events. Please also send them with a labelled hat, sunscreen and water bottle.

Parents picking up students from the Track must inform teacher and sign their child out through the Staff member in the stands.

Thank you to all the parent volunteers and staff for making this day possible!

Bus leaving Rotary bowl will be leaving promptly at 1:30pm

***PAC will be running the concession stand at the school track and field meet on April 22nd. They will have snacks, drinks and Mambos pizza available.*

Anyone driving to the Track Meet must park at the NIC (Nanaimo Ice Centre).

Community Feedback:

Beginning in the 2024/2025 school year there will be a very slight adjustment to all elementary bell schedules. Each elementary school will be adding 15 instructional minutes to their school week by adding 3 minutes to either the start or the end of each school day over the 5 days of the week.

This is time that had previously been reserved for PLC (professional learning communities) but is now being added back as instructional time in all of our elementary schools.

Any parent who would like to vote on which option works best for their family please fill out this simple survey to help inform our decision. The survey will close at end of the day on Friday April 26th

<https://forms.office.com/r/02jjhK0bwJ>

Ecole Hammond Bay Staff and
Community Feedback



From the PAC

Every parent and guardian is a member of the PAC. Please make sure you check PAC updates to know how you can support the Ecole Hammond Bay Community. Thank you to the parents who have been volunteering all year to make our school such a wonderful place to learn.

Please check out the PAC page on the school website or contact the PAC at ecolehammondbaypac@gmail.com if you have any questions.

Hot Lunch Orders

One way to support the community is by ordering hot lunches. Get your orders in for the Spring 2024 Hot Lunch dates (April – June). Next up is Edo Japan on Friday, May 3rd

<https://munchalunch.com/schools/hammondbay/>

Parent Corner

Triple P Parenting, contact Kendra @ Island Health, 250-618-9422 (parents of 2-12 year olds)

- Raising Resilient Children (April 24, 6-7:30)

Compass Mental Health, BC Children's

Hospital: <https://www.compassbc.ca/education>

- Compass helps care providers access a range of educational resources, toolkits, and webinars on child and youth mental health and substance use.

Living in Families with Teens (LIFT Program, ages 12-18),

<https://www.narsf.org/living-in-families-with-teens/>

Erase Report it Tool

Resources & Information:

<https://www2.gov.bc.ca/gov/content/erase>

What is happening at Ecole Hammond Bay:

